



Health and Safety Policy

Document Control

Version	Author	Summary of Changes	Approved By	Date Published	Date of Review
3	ALE/RGR	Update to remove ref to DMBC/NYCC and new Estates Manager/procedure: 7.0, 7.1, 7.2, 7.3, 8.2, 11.2, 11.11, 11.31, 11.34	Trust Board	Oct 2022	Oct 2023
4	ALE	1.2, 11.35 new sections; Update to 5.2, 11.2, 11.11, 11.21, 11.25, 11.28, 11.30.	F&O	Nov 2023	Nov 2024
5	ALE	Update 8.2; 11.2; 11.6; 11.23; removal 11.34 (COVID);	F&O	Nov 2024	Nov 2025
6	ALE	Update 3.0; 4.1; 5.1; 5.2; 6.1; 11.2; 11.6; 11.7; 11.9; 11.11; 11.13; 11.16; 11.18; 11.24; 11.27; 11.29; 11.32; 11.33	Trust Board	Nov 2025	Nov 2026

Contents

STATEMENT OF INTENT	4
1.0 INTRODUCTION	5
2.0 LEGER EDUCATION TRUST	6
3.0 THE HEADTEACHER	6
4.0 STAFF HOLDING POSITIONS OF SPECIAL RESPONSIBILITY	6
5.0 SPECIAL OBLIGATIONS OF STAFF	7
6.0 OBLIGATIONS OF ALL EMPLOYEES.....	8
7.0 ROLE OF THE COMPETENT PERSON	8
8.0 OBLIGATIONS OF CONTRACTORS	8
9.0 STUDENTS	9
10.0 VISITORS	9
11.0 PROCEDURES AND ARRANGEMENTS	10
11.1 INTRODUCTION	10
11.2 ACCIDENT, INCIDENT AND ILL-HEALTH.....	10
11.3 ASBESTOS.....	12
11.4 PROCEDURES FOR DEALING WITH HEALTH AND SAFETY ISSUES.....	13
11.5 BEHAVIOUR MANAGEMENT.....	14
11.6 FIRE MANAGEMENT	14
11.7 EMERGENCY PROCEDURE	14
11.8 CATERING	14
11.9 CLEANING AND MAINTENANCE	15
11.10 CONTRACTORS	15
11.11 CURRICULUM SAFETY	15
11.12 DISPLAY SCREEN EQUIPMENT (DSE)	15
11.13 ELECTRICAL EQUIPMENT	16
11.14 GLAZING SAFETY	17
11.15 HAZARDOUS SUBSTANCES.....	17
11.16 HAZARD REPORTING	18
11.17 INCLUSION	18
11.18 LIGATURE RISK REDUCTION.....	19
11.19 LEGIONNAIRES DISEASE	19
11.20 LONE WORKING.....	20
11.21 MAINTENANCE AND REPAIR OF EQUIPMENT.....	20
11.22 MANUAL HANDLING.....	20
11.23 PERSONAL PROTECTIVE EQUIPMENT (PPE).....	20
11.24 RISK ASSESSMENT	20
11.25 SECURITY.....	21

11.26 SMOKING	22
11.27 STAFF TRAINING AND DEVELOPMENT.....	22
11.28 STRESS MANAGEMENT	22
11.29 TRANSPORT.....	23
11.30 VISITORS – HEALTH AND SAFETY	23
11.31 WORKING AT HEIGHT.....	25
11.32 WORK EXPERIENCE PLACEMENTS (STUDENTS).....	26
11.33 ANIMALS/PETS ON SITE.....	28
11.34 SLIPS, TRIPS AND FALLS	28

STATEMENT OF INTENT

The Board and Chief Executive of Leger Education Trust (LET) believe that ensuring the health and safety of staff, students and visitors is integral to our Value of **Responsibility** and achieving **Operational Excellence** in all Academies in the Trust.

We are committed to:

- Providing a safe and healthy learning and working environment.
- Preventing accidents and work-related ill health.
- Compliance with statutory requirements as a minimum.
- Assessing and controlling risks from curriculum and non-curriculum work activities.
- Ensuring safe working methods and providing safe working equipment.
- Providing effective information, instruction and training.
- Consulting with employees and their representatives on health and safety matters.
- Monitoring and reviewing our systems and prevention measures to ensure they are effective.
- Setting targets and objectives to develop a culture of continuous improvement.
- Ensuring adequate welfare facilities exist throughout the organisation.
- Ensuring adequate resources are made available for health and safety issues, so far as is reasonably practicable.



Adam Dale
Chief Executive Officer

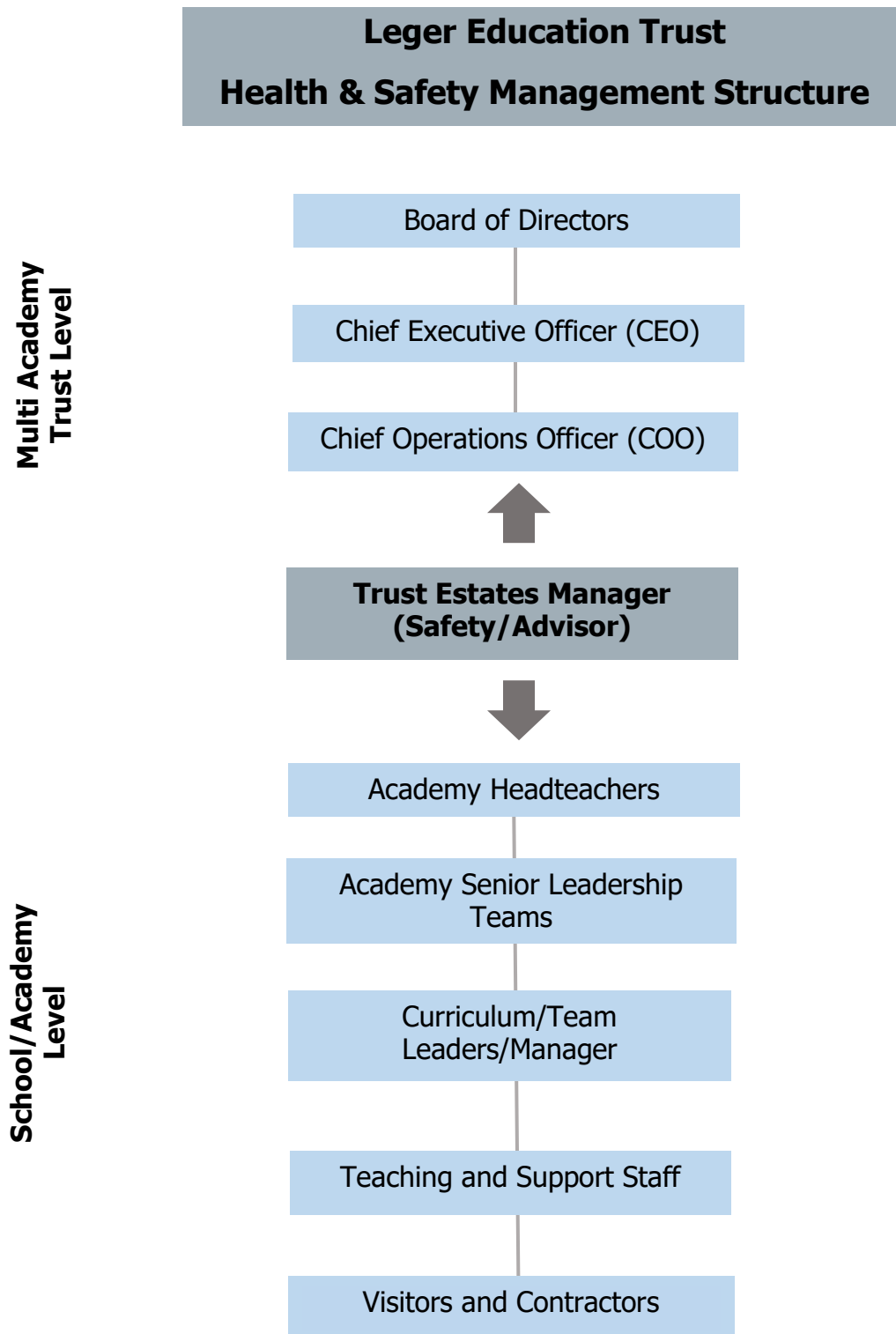


Nicola Bailey
Chair of Trustees

1.0 INTRODUCTION

1.1 In order to achieve compliance with the Statement of Intent Leger Education Trust and the Senior Leadership Team in each Academy will have additional responsibilities assigned to them as detailed in this part of the policy.

1.2 Health and Safety Management Structure



2.0 LEGER EDUCATION TRUST

2.1 Leger Education Trust has the responsibility to ensure that:

- A clear written policy statement is created which promotes the correct attitude towards safety in staff, students, visitors and contractors.
- Responsibilities for health, safety and welfare are allocated to specific people and that these persons are informed of these responsibilities.
- Persons have sufficient experience, knowledge and training to perform the tasks required of them.
- Clear procedures are created which assess the risk from hazards and produce safe systems of work.
- Sufficient funds are set aside with which to operate safe systems of work.
- Health and safety performance is measured both actively and reactively.
- The health and safety policy and performance is reviewed annually.

3.0 THE HEADTEACHER

3.1 In their capacity as the key person responsible for the effective management of health and safety, the Headteacher will ensure the effective implementation of this policy by ensuring:

- This Policy is communicated to all relevant persons.
- Appropriate information on significant risks is given to visitors and contractors.
- Appropriate consultation arrangements are in place for staff and their representatives.
- All staff are provided with information, instruction and training on health and safety issues.
- Risk assessments of the premises and working practices are undertaken.
- Safe systems of work are in place as identified from risk assessments.
- Emergency procedures are in place.
- Machinery and equipment is inspected and tested to ensure it remains in a safe condition.
- Records are kept of all relevant health and safety activities e.g. assessments, inspections, accidents, training etc.
- Arrangements are in place to inspect the premises and monitor performance.
- Accidents are investigated and any remedial actions required are taken or requested.
- The activities of contractors are adequately monitored and controlled.
- A report to Leger Education Trust Board on the health and safety performance of the Academy is completed termly.
- They take ultimate responsibility for the health and safety of the activities of the academy

4.0 STAFF HOLDING POSITIONS OF SPECIAL RESPONSIBILITY

4.1 This includes the Deputy/Assistant Heads, Business Managers, Head of Departments, Site Managers, and Catering Manager. They must:

- Apply the Health and Safety Policy to their own department or area of work and be directly responsible to the Headteacher for the application of the health and safety procedures and arrangements.
- Develop health and safety procedures in accordance with the Trust's policies which identify the key risks in their areas of responsibility and the organisation and arrangements for managing those risks.
- Carry out regular health and safety risk assessments of the activities for which they are responsible on an annual basis as a minimum.
- Ensure that all staff under their management are familiar with the health and safety procedures for their area of work.
- Resolve health, safety and welfare problems that members of staff refer to them, or refer to the Headteacher any problems to which they cannot achieve a satisfactory solution within the resources available to them.

- Carry out regular checks of their areas of responsibility to ensure that equipment, furniture and activities are safe and record these checks where required.
- Ensure, as far as is reasonably practicable, the provision of sufficient information, instruction, training and supervision to enable other employees and students to avoid hazards and contribute positively to their own health and safety.
- Ensure all accidents/incidents reported on the accident/incident reporting system Meditracker.
- Carry out or support the carrying out of accident/incident investigation as specified by the accident, incident, near miss and investigation procedures and directed by the Headteacher
- Include health and safety in the annual report for the Headteacher

5.0 SPECIAL OBLIGATIONS OF STAFF

5.1 Teachers:

- Exercise effective supervision of their students and to know the procedures in respect of the activity risk assessment, fire, first aid and other emergencies, and to carry them out.
- Teachers should not leave students unattended and must ensure that their actions do not lead to an insufficient adult to child ratio occurring in classrooms or other supervised areas at any time.
- Give clear oral and written health and safety instructions and warnings to students as often as necessary.
- Ensure the use of personal protective equipment and guards where necessary.
- Make recommendations to their Head of department or SLT on health and safety equipment and on additions or necessary improvements to plant, tools, equipment or machinery.
- Integrate all relevant aspects of safety into the teaching process and, where necessary, give special lessons on health and safety in line with National Curriculum requirements for safety education.
- Ensure that no personal items of equipment (electrical or mechanical) or proprietary substances are brought into the Academy without authorisation.
- Regularly check their classrooms for potential hazards and report any observed on the reporting system IAMCOMPLIANT.
- Report all accidents, defects and dangerous occurrences (including near misses) on the reporting system Meditracker.

5.2 Business Managers:

The Business Manager as the person with special responsibility for health and safety will ensure that:

- the Board of Governors and the Headteacher are advised of relevant changes in health and safety legislation, codes of practice and Department for Education standards
- risk assessment requirements are co-ordinated and the implementation of any action required is monitored
- whole school risk assessments are reviewed and updated at least annually
- regular staff meetings are held where health and safety issues can be raised and discussed
- they provide advice on health and safety training requirements
- details of accidents, dangerous occurrences or diseases that are notifiable are reported to the Enforcing Authorities and recorded where appropriate on the reporting system.
- They support and undertake accident/incident investigations as per the accident/incident/near miss and accident investigation procedure
- contact with external organisations such as the emergency services is co-ordinated
- health assessment requirements are identified and advised to management
- the schedule of statutory examinations of plant, equipment and vehicles is maintained and Heads of Department are made aware of impending examinations

- premises, plant, equipment and school vehicles are maintained in a safe condition
- regular liaison with the Trust Estates Manager for health and safety advice
- adequate arrangements are in place to ensure the security of the school, the staff, visitors and students
- adequate arrangements for fire and first aid are established and maintained
- welfare facilities provided are maintained in a satisfactory state
- contractors engaged are on the Trust approved supplier list and are made aware of relevant safeguarding and local health and safety rules and procedures
- health and safety notices are displayed

6.0 OBLIGATIONS OF ALL EMPLOYEES

6.1 Apart from any specific responsibilities which may have been delegated to them, all employees should set a personal example and must:

- Act in the course of their employment with due care for the health, safety and wellbeing of themselves, other employees and other persons.
- Observe all instructions on health and safety issued by the Headteacher or any other person delegated to be responsible for a relevant aspect of health and safety.
- Act in accordance with any specific H&S training received.
- Report all accidents, incidents and near misses in accordance with procedures appended to this policy on the meditracker system
- Co-operate with other persons to enable them to carry out their health and safety responsibilities.
- Report onto Iamcompliant of all potential hazards to health and safety, in particular those which are of a serious or imminent danger.
- Inform their Line Manager of any shortcomings they identify in the local health and safety arrangements.
- Exercise good standards of housekeeping and cleanliness.
- Know and apply the procedures in respect of health and safety, fire, first aid and other emergencies.
- All employees who authorise work to be undertaken or authorise the purchase of equipment will ensure that the health and safety implications of such work or purchases are considered.

7.0 ROLE OF THE COMPETENT PERSON

7.1 The Trust engages a competent person, the Trust Estates manager to undertake an annual safety inspection of every academy within the Trust.

7.2 The competent person has sufficient training, experience and knowledge that allows them to complete a full inspection of the academy site and make recommendations.

7.3 The competent person will provide advice to the schools within the Trust.

8.0 OBLIGATIONS OF CONTRACTORS

8.1 When the premises are used for purposes not under the direction of the Headteacher then, subject to the explicit agreement of Leger Education Trust, the nominated person in charge of the activities will have responsibility for safe practices in the areas under their control.

8.2 All contractors must:

- take reasonable care of their own safety
- Be on the Trust's approved supplier list
- Plan work thoroughly and follow all required regulations such as the Construction Design and management regulations (CDM)

- take reasonable care of the safety of students, school staff and others affected by their actions
- observe the safety rules and safeguarding procedures of the school
- submit their health and safety policy and relevant risk assessments and method statements to the school for approval
- comply with and accept our health and safety policy, if they do not have one
- dress appropriately, sensibly and safely when on school premises and for the task being undertaken
- conduct themselves in an orderly manner in the work place and refrain from any antics or pranks
- use all safety equipment and/or protective clothing as required by the school and as indicated in the risk assessment for the task
- avoid any improvisations of any form which could create an unnecessary risk to their personal safety and the safety of others
- maintain all equipment in good condition, not use any defective equipment and ensure that any portable electrical equipment bears a current test certificate
- report all accidents and serious incidents to the school whether an injury is sustained or not
- ensure that their employees only use equipment for which they have been trained
- observe all agreed procedures for processes, materials and substances used
- observe the fire evacuation procedure and the position of all fire equipment and not obstruct fire exit routes
- provide adequate first aid arrangements unless otherwise agreed with the school.

8.3 In instances where the contractor creates hazardous conditions and refuses to eliminate them or to take action to make them safe, the Headteacher or their representative will take such actions as are necessary to protect the safety of staff, students and visitors.

9.0 STUDENTS

9.1 Students, in accordance with their age and aptitude, are expected to:

- Exercise personal responsibility for the health and safety of themselves and others.
- Observe standards of dress consistent with safety and/or hygiene.
- Observe all the health and safety rules of the Academy and in particular the instructions of staff given in an emergency.
- Use and not wilfully misuse, neglect or interfere with PPE and other items provided for their health and safety.

10.0 VISITORS

- All visitors are required to sign in at the reception. Visitors will be collected from reception by the member of staff concerned or escorted to the appropriate area of the Academy.
- Hirers of the Academy premises must use plant, equipment and substances correctly and use the appropriate safety equipment. Hirers will be made aware of their obligations in relation to health and safety when making the booking.
- Whilst on site, all visitors and contractors must wear a visitor's badge and lanyard in accordance with the Lanyard Policy
- Cleaning contractor's employees must wear an identifiable uniform or an identity badge at all times.
- Temporary teaching staff on cover duties will be required to indicate their presence by reporting to reception.
- If a member of staff meets someone on site who they do not recognise and is not wearing a visitor's badge or lanyard, they should, if they do not feel threatened, enquire if the person needs assistance and direct them either to the reception or off the site, as appropriate.

- If an intruder is uncooperative in going to the reception or leaving the site, or a member of staff feels threatened, or is threatened with violence or a violent attack takes place, immediate help from the Police should be sought by telephone. Staff must not put themselves at risk.

11.0 PROCEDURES AND ARRANGEMENTS

11.1 INTRODUCTION

The following procedures and arrangements have been established at Leger Education Trust to eliminate or reduce health and safety risks to an acceptable level and to comply with minimum legal and statutory requirements. The list provides a brief, alphabetical summary of all the key health and safety arrangements applicable to the Academy. More detailed policies and written procedures for a number of these areas are also available and these will be provided as applicable to staff and visitors.

11.2 ACCIDENT, INCIDENT AND ILL-HEALTH

This policy sets out the procedures for recording, reporting and investigation that are to be followed when any employee, student, visitor or contractor has an accident, near miss or dangerous occurrence on the school's premises. Employees who develop a work-related illness must also report via these procedures.

Definitions:

- An accident is an unplanned event that causes injury to persons, damage to property or a combination of both.
- An incident/ near miss is an unplanned event that does not cause injury or damage but could do so.
- A work-related illness is illness that is contracted by an employee through the course of work as a result of activities carried out by the school.

Accident Recording

All accidents, incidents and near misses must be recorded on the accident reporting system, Meditracker. This will then notify the Business Manager who will be responsible for informing the Trust Estates Manager who will then inform the Health and Safety Executive.

Accident Reports will be reviewed regularly by the Business Manager to ascertain the nature of incidents that have occurred in the school. This review will be in addition to any investigation of the circumstances surrounding each incident.

Reporting Requirements

Certain accidents causing injury, both fatal and non-fatal, certain occupational diseases and certain dangerous occurrences are reportable to the Enforcing Authority via the Health and Safety Executive website under the Reporting of Injuries, Diseases and Dangerous Occurrences Regulations 2013 (RIDDOR).

Specified injuries including the following reportable events must be reported by the quickest means practicable, usually the telephone:

- death
- major injury (includes any fracture (other than to fingers, thumbs or toes),
- amputation, loss of sight, crush injury resulting in internal damage, serious burns,
- scalping, loss of consciousness from a head injury or asphyxia, an injury from working in an enclosed space)
- hospitalisation of a non-employee as a result of a work activity

- Incapacitation for work of a person for more than 7 consecutive days as a result of an injury caused by an accident at work must be notified within 15 working days.
- To calculate whether the absence classifies as 'over 7-day':
 - a. Exclude the day of the incident if they went home or did not return to work on the day
 - b. Include weekends, bank holidays and weekdays (whether the person would normally work on them or not). For example: if a person has an accident on Friday and comes back to work the following Friday, then count Saturday, Sunday, Monday and Tuesday etc. but this is still only 6 days; however, if their next day of work is the Monday it would count as 9 days and would be reportable.

Non-Consensual Violence

Major or over 7 day injuries to people at work arising from non-consensual violence are notifiable.

Reporting of accidents involving students or visitors

If a student or visitor has an accident this must be reported if:

- The person involved is killed or taken to hospital; and the accident arises out of or in connection with a work activity
- Examples of 'in connection with a work activity' are:
 - Work organisation – supervision of a field trip
 - Plant or substances – lifts, machinery, experiments
 - Condition of premises, play grounds, play or PE equipment
 - Sports activities as part of the curriculum where there is death or hospitalisation
 - Playground accidents due the condition of the premises or inadequate supervision.

For further advice on injuries, diseases or dangerous occurrences requiring notification please contact **the Trust Estate Manager** alethem@legereducationtrust.com

Contact details for the **Health and Safety Executive** are:

Tel: 0845 300 9923 (Monday to Friday 8:30am to 5:00pm)

Website: <http://www.hse.gov.uk/riddor/report.htm>

The completed report form sent back by the HSE should be kept with other accident records and documents on the accident investigation. Forms are kept to advise the insurers of a potential claim and to present to the Enforcing Authority in the event of an investigation. Records are to be kept for 7 years from the date of the incident.

Accident Investigation

The Trust has an accident/incident and investigation procedure which sets out which accidents/incidents and near misses will be investigated. It also includes who and the type of investigation will take place. A copy of this procedure is sent out to all staff on the IAMCOMPLIANT system for them to read and sign

Accident/Ill Health Evaluation

The Business Manager will undertake periodic evaluations of all reported incidents, near misses and incidents of ill health. The Trust Estates Manager will produce a termly report which will be issued to each school and the Board of Trustees. The Executive Director of Operations will report this annually to the Board of Trustees. This will allow the identification of patterns and trends and enable corrective action to be taken.

Active Monitoring Systems

Active monitoring provides essential feedback on performance before an accident, ill health, or an incident. It involves checking compliance with performance standards and the achievement of specific objectives. Its primary purpose is to measure success and reinforce positive achievement by recognising good work.

The forms that these systems take at Leger Education Trust are:

- The periodic examination of documents to check standards are complied with, i.e. reviewing risk assessments, training records, induction records.
- The systematic inspection of premises, plant and equipment, to ensure the continued effective operation of hardware controls – carried out termly by the Executive Director of Operations, Headteacher, Chair of the Academy Governing Body and the Business Manager and with the use of the Every and the accident reporting system.
- Environmental monitoring and health surveillance to check the effectiveness of health control measures annually as above.
- Safety tours, as above.
- Audits (Health and Safety audits, Fire Risk Assessment etc.) annually as above.
- Regular reports to management meetings.
- Other measures (accident monitoring, Environmental Health visits, Investors in People, OFSTED).

First Aid and Medical Needs

- Each Academy has completed a first aid risk assessment to ensure ample provision of trained personnel and First Aid supplies. There is a separate policy for administering medicine. Academies keep an up to date list of trained personnel.

Managing Medicines – see separate policy

- No student is allowed to take medication on the Academy site without a letter of consent from his/her parent/carer. Staff must notify the Headteacher if they believe a student to be carrying any unauthorised medicines/drugs. The Academy policy for the Administration of Medication provides detailed guidance and all staff should be familiar with this policy.

11.3 ASBESTOS

The Academy will protect employees, students and other persons potentially exposed to asbestos as far as is reasonably practicable. Everyone who needs to know about the presence of asbestos will be alerted. No one will be allowed to start any work that could disturb asbestos unless the correct procedures are to be employed.

This will be achieved by minimising exposure through the management of asbestos-containing materials in school premises by:

- Assessment - The premises will be surveyed to determine whether asbestos-containing materials are present. It will be presumed that materials contain asbestos unless there is strong evidence to the contrary.
- The potential amount and condition of the asbestos-containing material will be assessed and measures will be identified to ensure that airborne asbestos fibres are not present or formed in the workplace.
- A Written Plan - A written plan or register that sets out the location of the asbestos-containing material and how the risk from this material will be managed will be prepared and steps will be taken to put the plan into action. The plan or register will be made available and the arrangements will be reviewed at regular intervals or when there has been a significant change to the organisation or personnel.

Access to Asbestos-containing Materials

Access to asbestos-containing materials in the premises will be controlled as far as is practicable so as to prevent inadvertent disturbance of the material and the release of asbestos fibres. Procedures will be put in place to ensure that anyone liable to disturb asbestos-containing materials is made aware of their location.

Monitoring and Maintenance

The condition of all asbestos-containing materials or materials suspected of containing asbestos will be inspected at agreed intervals to ascertain that there has been no damage or deterioration. Where damage or deterioration is found the asbestos-containing material will be reassessed and repaired or removed as appropriate.

Training and Information

Employees who may come into contact with asbestos containing materials (ACMs) through the course of their work will receive adequate training and information, which will be updated/repeated at the required intervals, such that they can recognise potential ACMs and know what precautions to take.

Asbestos-related Emergencies

Procedures to deal with asbestos-related incidents will be put in place (including the provision of information and warning systems) unless there is only a slight risk to the health of employees, students and others.

Arrangements for Controlling Work on Asbestos

Any work on, or removal of, asbestos-containing materials will be controlled to ensure that adequate precautions are taken to prevent the release of asbestos fibres. Work with asbestos and asbestos-containing materials is to be carried out by a licensed contractor (licensed by the HSE) unless the work is exempted from the requirement for licensing.

Selection and Control of Contractors to Work on Asbestos-containing Materials

When contractors are engaged to work on school premises, adequate steps will be taken to ensure the contractors are competent and have sufficient skills and knowledge to do the job safely and without risks to health. Only contractors licensed by the HSE will be used for the removal of asbestos-containing materials, unless the work involves the removal of materials in which:

- asbestos fibres are firmly linked in a matrix
- the exposure during the removal process is likely to be sporadic or of low intensity
- Contractors hired to carry out building or allied trade work that will involve minor work with asbestos must comply with the Control of Asbestos Regulations 2012.

11.4 PROCEDURES FOR DEALING WITH HEALTH AND SAFETY ISSUES

Where an employee raises a health and safety problem related to work with asbestos, the school will:

- take all necessary steps to investigate the circumstances
- take corrective measures where appropriate
- advise the employee of actions taken

Where a problem arises relating to the condition of, or during work on, asbestos-containing material, the employee must:

- inform the Headteacher or Business Manager
- in the case of an accident or emergency, respond quickly to ensure effective treatment.

11.5 BEHAVIOUR MANAGEMENT

All staff must be familiar with the Academy policies for behaviour management and bullying. Any incidents of unacceptable behaviour or bullying must be reported and dealt with in accordance with these policies.

11.6 FIRE MANAGEMENT

The Headteacher has overall responsibility for fire management and the fire strategy is managed/maintained through the fire risk assessment. This is reviewed annually as a minimum and more frequently if changes occur such as a student with a history of fire starting.

The School Business Manager is responsible for:

- The formal maintenance and regular testing of the fire alarm, emergency lighting and any other fire management systems.
- The maintenance and inspection of fire compartmentation.
- The maintenance of exit/escape routes and signage.
- The fire evacuation procedure including assigning roles and responsibilities to staff members.
- Undertake the actions of the fire risk assessment

All staff must be familiar with the Academy emergency plan and evacuation procedures.

11.7 EMERGENCY PROCEDURE

Each Academy has a separate procedure for managing an emergency, the emergency plan, which should be followed in the event of

- People related issues – Major accidents, epidemics, abductions or acts of extreme violence in which there is clearly a risk of serious injury
- Premises issues – Fire, explosions, floods, subsidence
- Technological – Computer related issues
- In the event of severe weather conditions, it is the responsibility of the Headteacher in liaison with the Chief Executive to make a decision on closure on grounds of health and safety. In the event of a decision to close on these grounds, governors will be informed.

The 'emergency plan' includes a toolbox of options which can be used in an emergency situation. These include evacuation, lockdown and invacuation

11.8 CATERING

The Catering Manager is responsible for the safe operation of the catering facilities. They must:

- Be familiar with the Health and Safety Policy.
- Prepare risk assessments for all catering activities.
- Ensure that all kitchen staff are instructed and informed to work in accordance with these documents.
- Inform the Business Manager or Headteacher of any potential hazards or defects.
- Be familiar with the current Food Safety legislation and the implications so far as the Academy is concerned.
- Have received appropriate training to undertake their role.
- Academy staff must not use the catering facilities and equipment without the prior agreement of the Headteacher and Catering Manager.

It is essential the catering staff understand their responsibility to report illness to the academy in a timely way. People who work around open food while suffering from certain infections (mainly from

bacteria and viruses) can contaminate the food or surfaces the food may come into contact with. This can spread infection to other people through the food. Details of notifiable illness and the period of required absence is detailed in the Food Standards Agency 'Food Handlers: Fitness to Work' and the Leger Education Trust Food Safety Management System.

In summary:

- Diarrhoea and/or vomiting are the main symptoms of illnesses that can be transmitted through food.
- Staff handling food or working in a food handling area must report these symptoms to management immediately.
- Managers must exclude staff with these symptoms from working with or around open food, normally for 48 hours from when symptoms stop naturally.
- Different action is required in some cases. In addition, all staff who handle food and who work around open food must always wash and dry their hands before handling food, or surfaces likely to come into contact with food, especially after going to the toilet. This is because it is possible to be infected but not have symptoms.

11.9 CLEANING AND MAINTENANCE

The Site manager/Caretaker and School Business Manager are responsible for ensuring the safe, routine maintenance and cleaning of the Academy premises and grounds in accordance with Leger Education Trust policies and procedures for maintenance.

11.10 CONTRACTORS

The Academy is responsible for the selection and management of contractors. Contractors will be on the Trust approved suppliers list and should be made aware of the Health and Safety Policy, Control of Contractors Procedure, safeguarding procedures and their obligations under it before commencing any work on site.

Academy staff must be aware of this policy and report any concerns regarding contractors' activities to the Headteacher immediately.

11.11 CURRICULUM SAFETY

Deputy/Assistant Headteachers and Head of Departments are responsible for ensuring that risk assessments are in place for all curriculum activities where there is a potential risk to staff and students.

The risk assessments must be made known to all teaching and support staff and reviewed regularly. Guidance from CLEAPSS, AfPE, HSE and other lead bodies should be adopted as appropriate.

Education Visits and Journeys

The Headteacher and the Educational Visit Co-ordinator are responsible for ensuring that all Academy off-site trips are managed in accordance with the Academy policy for Educational Visits and Journeys. All teachers must be familiar with this policy if undertaking educational visits.

11.12 DISPLAY SCREEN EQUIPMENT (DSE)

All reasonable steps will be taken by the Academy to secure the health and safety of employees and students who work with display screen equipment.

To achieve this objective, the Academy will:

- identify those employees who are users as defined by the regulations (see below)
- carry out an assessment of each user's workstation
- implement necessary measures to remedy any risks found as a result of the assessment
- provide adequate information and training to persons working with display screen equipment
- endeavour to incorporate changes of task within the working day, to prevent intensive periods of on-screen activity
- review software to ensure that it is suitable for the task and is not unnecessarily complicated

- arrange for the provision of free eye tests when requested, at regular intervals thereafter and where a visual problem is experienced
- advise existing employees, and all persons applying for work with display screen equipment, of the risks to health and how these are to be avoided
- investigate any discomfort or ill-health believed to be associated with the use of display screen equipment and take appropriate remedial action
- make special arrangements for individuals with medical conditions that could be adversely affected by working with display screen equipment.

This policy is aimed at those who regularly use DSE as the main part of their employment and for more than 2½ hours per day. Typically, this will therefore apply to administrative functions, the teaching of computer skills and other prolonged users. Others, including students, who operate DSE should have a workstation which meets the standards set down in the regulations but are not entitled to financial contributions.

Employees must:

- comply with the instructions and training given regarding safe workstation set-up and use, including the need for regular changes of activity or breaks and the use of the equipment provided
- inform the Business Manager of any disability or medical condition which may affect their ability to work using display screen equipment or be affected by working with DSE (this information will be treated confidentially)
- report to the Business Manager any discomfort or health concern believed to be associated with the use of DSE (this information will be treated confidentially)

Eye tests

Under the DSE regulations staff identified as DSE users are entitled to an eyesight test, every 2 years by a qualified optician (and corrective glasses if required specifically by the Optician for DSE use). The key actions necessary to control the health and safety risks arising from the use of Display Screen Equipment (DSE) are to:

- Identify all individuals who are classified as DSE 'Users'.
- Ensure risk assessments of DSE workstations been carried out using the Display Screen Equipment Workstation Assessment Form.
- Supply users with information and/or training on the safe use of Display Screen Equipment.
- Advise staff about setting up laptops on a suitable surface and the risks of working for prolonged periods.
- Ensure remedial actions identified by DSE risk assessments been carried out.
- Review risk assessments annually or sooner if significant changes have occurred.

The Business Manager is responsible for ensuring that DSE assessments are completed for administrative staff and teaching staff who regularly use laptops or desktop PCs as the main part of their employment. Regular laptop users will be provided with docking stations. Staff are reminded that laptops should not be used on laps, chair arms and other unsuitable surfaces.

11.13 ELECTRICAL EQUIPMENT

All reasonable steps will be taken to secure the health and safety of employees, students and others who use, operate or maintain electrical equipment.

To ensure this objective the Academy will:

- a. ensure electrical installations and equipment are installed in accordance with IEE Wiring Regulations

- b. maintain the fixed wiring installation in a safe condition by carrying out routine and statutory safety tests
- c. inspect and test portable equipment as often as required to ensure safety
- d. inspect and test second-hand electrical equipment lent to, or borrowed by, the school
- e. require hirers of school premises to ensure electrical appliances brought onto school premises have a current (less than 12 months) test certificate
- f. promote and implement a safe system of work for maintenance, inspection and testing
- g. forbid live working unless absolutely necessary, in which case a permit must be issued
- h. ensure employees and contractors who carry out electrical work are competent to do so
- i. maintain detailed records

Employees must:

- visually check electrical equipment for damage before use
- report any defects found immediately to the Business Manager. However, if there is any doubt whether the equipment is safe then it should be labelled 'out of use' and withdrawn until it has been tested and declared fit for use by a qualified person.
- not use defective electrical equipment
- not carry out any repair to any electrical item unless qualified to do so
- switch off non-essential equipment from the mains when left unattended for long periods
- not bring any electrical item onto school premises until it has been tested and a record of such a test has been included in the appropriate record
- not leave electric cables in such a position that they will cause a tripping hazard or be subject to mechanical damage
- never run extension leads under carpets or through doorways
- not daisy-chain extension leads to make a longer one
- not use adapter sockets – devices that plug into mains sockets to increase the number of outlets.

The key actions necessary to control the health and safety risks arising from electricity are to:

- a. Have the main electrical installation tested every five years except for those parts of school with licensed areas or lightning protection which should be tested annually.
- a. Retain copies of electrical test certificates
- b. Arrange for the inspection and testing of portable electrical appliances in accordance with the guidance on electrical testing
 - a. Keep a record must be kept of all portable items of electrical equipment showing:
 - the detail of the item
 - the date of acquisition
 - details of any inspection, testing or repair work

The School Business Manager will ensure that testing, inspection and maintenance of equipment is undertaken as required and this is monitored on the IAMCOMPLIANT system

11.14 GLAZING SAFETY

The design of the Academies means that there is a lot of glazing inside the building, some classrooms have glazed walls onto the corridors, and these must remain clear at all times and must not have anything affixed to them. Glazing panels on walkways will be clearly marked to prevent accidental collisions. All glazing is strengthened safety glass and will provide protection on fire routes.

11.15 HAZARDOUS SUBSTANCES

The School Business Manager is responsible for ensuring that all cleaning and maintenance products that may be hazardous to health are assessed before being used. Hazardous substances are defined by the COSHH regulations as:

- Substances classified as very toxic, toxic, harmful, corrosive or irritant. These can be identified by their warning label and carry the pictograms detailed below
- biological agents directly connected with work including micro-organisms
- dust of any kind when present as a substantial concentration in the air

Hazardous substances must be stored securely in accordance with the manufacturer's instructions and only used by authorised persons trained in the safe use of the product.

All staff are reminded that no hazardous substances should be used without the permission of the Headteacher. The School Business Manager will complete an assessment for any authorised products and an instruction for safe use.

Substances used in the practical curriculum will normally be stored and used in accordance with CLEAPSS.

Products with low toxicity routinely used in the classrooms must be stored securely and only used by staff or students under supervision. These will include such items as:

- Spirit based marker pens
- Corrective fluid
- Aerosol paints

All the above should be used in a well ventilated area.

Dust in the Technology lessons are controlled by LEV and experiments in Science are carried out in a Fume Cupboard. No member of staff or student should be at risk through exposure to hazardous substances used or created in the practical curriculum.

Maintenance, Examination and Testing

Where controls such as fume cupboards, dust extraction for wood working equipment etc. are provided it is necessary to ensure that they are properly maintained. This will require visual and operational checks pre use in addition to a thorough examination and tests of engineering controls. In the case of local exhaust ventilation, tests for fume cupboards, woodworking extraction etc. should be carried out at least every fourteen months. A record of the results of all examinations must be kept for at least 7 years.

All PPE must be kept clean, in good repair and stored correctly to prevent contamination.

Information, Instruction and Training

Information, instruction and training must be given to employees and students who may be exposed, about the risks to health and precautions.

11.16 HAZARD REPORTING

An important feature of this policy is the operation of an effective hazard reporting system. Any employee, student, visitor or contractor is encouraged to report any sub-standard condition or practice. The reporting of hazards, in the main, should be done through the online compliance system IAMCOMPLIANT. All staff have access to this and it is their responsibility to report hazards raised by visitors and contractors.

11.17 INCLUSION

The Headteacher is responsible for ensuring that there are adequate facilities and support staff to ensure the health, safety and welfare of any student with physical disabilities. All teaching and support staff must be given any information about a student's needs and receive such training as is necessary for them to be able to support the student's learning, social and personal needs.

The SENDCO must ensure that all risk assessments for curriculum activities are adapted as necessary to ensure the safety of any student with physical disabilities. No student should be excluded from an activity on the grounds of health and safety unless this is absolutely unavoidable.

Where it is considered essential to exclude a student from all or part of an activity this exclusion must be authorised by the Headteacher.

11.18 LIGATURE RISK REDUCTION

A ligature is anything that binds or ties - which could include a range of items such as bedding, clothing, belt, cord, rope or other material.

A ligature point is anything that could be used to attach a ligature for the purpose of strangulation or hanging. This could include shower rails, coat-hooks, water pipes and window frames – but other potential ligature points should be considered. As well as ligature points at high level used for hanging ligature points could be at low level, with service users using other means e.g. twisting their bodies, to achieve the same effect.

Risk assessments will be undertaken at least annually.

If building changes such as but not limited to, structural, change of use, room layout and furnishings are made, additional assessments will be undertaken by the School Business Manager. Any potential risks must be notified to the Chief Operating Officer and appropriate measures taken.

Assessment and safety should be considered both as part of the planning process and when the work is completed. If a new safety alert relating to suicide risks in Trust premises is received, the assessment will focus on the new risk identified with an awareness of other potential risks. Following assessment identified risks will be identified to the Chief Operating Officer for action. The outcome of the assessment will be communicated to all academies within the Trust. Any new structures or buildings plans will be assessed for risk of potential suicidal idealisation concerns and reduced risk/anti-ligature fittings used where available.

11.19 LEGIONNAIRES DISEASE

All reasonable steps will be taken to identify potential legionellosis hazards and to prevent or minimise the risk of exposure.

The Academy will:

- Carry out a Legionella Risk Assessment
- Prepare a written scheme/plan for preventing or controlling the risk of Legionella
- Implement and manage the scheme/plan
- Keep records for a minimum of 5 years.

The day to day responsibility for monitoring and ensuring that the systems are being correctly operated, will be allocated to a person within each school. At risk systems include the hot and cold water storage and distribution system.

To achieve control of legionella bacteria the school will implement the following:

- Avoidance of Conditions Favouring Growth of Organisms. As far as practicable, water systems will be operated at temperatures that do not favour the growth of legionella. The recommended temperature for hot water is 60°C (storage) and either above 50°C or below 20°C for distribution, as care must be taken to protect people from exposure to very hot water.
- The use of materials that may provide nutrients for microbial growth will be avoided.

- Corrosion, scale deposition and build-up of bio films and sediments will be controlled and tanks will be lidded.
- Monitoring and recording. Temperatures of water outlets will be checked and recorded to ensure temperature controls to prevent bacterial growth are maintained.
- Periodic disinfection of shower heads to remove any scale and bacteria.
- Establish emergency procedures if during routine sampling/inspection of hot and cold water systems Legionella bacteria is discovered in any systems likely to provide a medium for the spread of infection (e.g. water aerosol spraying equipment) these will be shut down and the situation reported immediately to the Business Manager/Headteacher.
- Provide training to the persons responsible for the day to day management of the water systems.

11.20 LONE WORKING

Lone workers can be defined as anyone who works by themselves without close or direct supervision. Lone working risk assessments are the responsibility of the department manager and will ensure the suitable control measures are in place and the risks are as low as reasonably practicable.

11.21 MAINTENANCE AND REPAIR OF EQUIPMENT

The detailed arrangements for the maintenance and inspection of equipment are described in the site maintenance procedures under the control of the School Business Manager. All faulty equipment must be taken out of use and reported to the School Business Manager. Staff must not attempt to repair equipment themselves.

11.22 MANUAL HANDLING

Leger Education Trust will ensure that any significant manual handling tasks are risk assessed, and these tasks eliminated where possible.

No member of staff should attempt to lift or move any heavy furniture or equipment themselves but must ask the caretaker for assistance.

All staff members will undertake manual handling training.

Students are not allowed to move or lift any heavy or unwieldy furniture or equipment.

11.23 PERSONAL PROTECTIVE EQUIPMENT (PPE)

The need for PPE has been identified in Risk Assessments. It is the Headteacher's responsibility to ensure adequate supplies of PPE.

Where the need for PPE has been identified it must be worn by any staff member or student who might be at risk of injury or harm to health.

Any staff member or student who refuses to use the PPE will be subject to disciplinary action.

PPE must be kept clean and stored in designated areas. Staff must report any lost or damaged PPE to their line manager.

11.24 RISK ASSESSMENT

Risk assessment is a systematic examination of what within our school can cause harm to people and it helps us determine whether we are doing enough or further actions are required to reduce the likelihood of injury or ill health.

Each school will have a risk assessment register which contains a register of all risk assessments complete with review dates. One of the authors must have experience in the subject area of the risk assessment to ensure they have the correct level of knowledge about the subject to write the risk assessment. Risk assessment training should be completed by those people who create risk assessments. The risk assessments will include all our known and reasonably foreseeable health and safety hazards covering all our premises, people, equipment and activities in order to control risks and to plan and prioritise the implementation of the identified control measures.

We will ensure that:

- assessments are carried out and records are kept
- control measures introduced as a result of assessments are implemented and followed
- employees are informed of the relevant results and provided with necessary training
- any injuries or incidents lead to a review of relevant assessments
- assessments are regularly monitored and reviewed
- suitable information, instruction and training will be provided to all persons involved in the risk assessment process

We may be controlling risks in various ways, determining the effectiveness of those controls is part of our risk assessment process.

It is the responsibility of the Headteacher to ensure risk assessments are conducted, in practice the actual assessment process will be delegated to Heads of Departments and Managers.

Generic/Model risk assessments are acceptable so long as the assessor:

- satisfy themselves that the 'model' risk assessment is appropriate to their work; and
- adapt the model to their own actual work situations.

When completing risk assessments, it is necessary to refer to the relevant subject guides:

Design & Technology

CLEAPSS Risk assessments in technology <http://www.cleapss.org.uk/>

BS 4163:2014 Health and Safety for Design and Technology in Schools and Similar Establishments
Design and Technology Association <https://www.data.org.uk/>

Science

CLEAPSS <http://www.cleapss.org.uk/>

CLEAPSS School Science Service Laboratory Handbook
CLEAPSS Hazcards

Food Science

CLEAPSS Food Technology <http://www.cleapss.org.uk/>

Art

National Society for Education in Art & Design (NSEAD)
<http://www.nsead.org/hsg/index.aspx>

Physical Education

Safe Practice in Physical Education and School Sport' afPE <http://www.afpe.org.uk/>

Offsite visits

Health and Safety of Students on Educational Visits. DfE
Outdoor Education Advisers Panel. <http://www.oeap.info/>

All risk assessments will be stored on the IAMCOMPLIANT system, be assigned an author and be read by the relevant staff members. They must be reviewed annually or more frequently if there is a change

11.25 SECURITY

CCTV systems are installed in some Academies and will be used to monitor incidents and also as evidence when investigating reports of poor or dangerous behaviour and of alleged criminal offences e.g. theft or assault.

Cash is kept in a safe and monies are banked regularly. Counting of accumulated cash must occur at an appropriate location on Trust premises. Site staff are responsible for carrying monies to and from the bank. Staff should not put themselves at risk in the event of an attempted robbery and should hand over the money to any would be assailant.

All staff are responsible for their own personal belongings and should not leave valuables unattended at any time. The Trust accepts no responsibility for items left unattended. In the event of a theft in The Trust, staff will be advised to report the incident to the police and will assist them in their investigations, with the use of CCTV recordings etc.

It is the responsibility of the staff to take appropriate measures to maintain the security of any Trust equipment being used, if equipment is found to be missing or believed stolen it is important that this is reported immediately to the Headteacher. When using portable and desirable equipment such as laptop computers staff will be required to follow careful procedures to ensure their security.

11.26 SMOKING

There is a no smoking policy throughout Trust premises.

All Trust staff and parents will be informed and signs will be on display at main entrances to Trust buildings in accordance with the Health Act 2005.

11.27 STAFF TRAINING AND DEVELOPMENT

There is a Trust wide health and safety training matrix which assigns training per role. It is the responsibility of the headteacher to annually assess the health and safety training needs of all staff and for arranging any identified training.

Safety induction must be given to all new employees on the first day of employment. This induction should take the form of a checklist and new staff should be clearly informed of The Trust's Health and Safety provisions e.g. Action to be taken in the event of a fire, Fire exits and knowledge of first aid arrangements.

Training must also be given to all key staff and staff with special responsibilities, such as the caretaker, School Business Manager, First Aid staff and staff taking students on trips.

11.28 STRESS MANAGEMENT

The Health and Safety Executive define stress as "the adverse reaction people have to excessive pressure or other types of demand placed on them". This makes an important distinction between pressure, which can be a positive state if managed correctly, and stress which can be detrimental to health.

Symptoms of stress include problems sleeping; dietary problem; mood swings; lethargy; inability to concentrate; fatigue; emotionalism; chest pains; palpitations; sweating and racing heart, if you suffer from these symptoms, you are advised to consult your GP without delay.

Stress at work can come about for a variety of reasons. It may be excessive workload, unreasonable expectations, or overly-demanding work colleagues. The Academy will endeavour to ensure a pleasant working environment and that employees are as free from stress as possible.

We will:

- work to identify all workplace stressors and conduct risk assessments to eliminate stress or control the risks from stress
- regularly review risk assessments
- consult with employees on issues relating to the prevention of work-related stress
- provide access to confidential counselling for employees affected by stress caused either by work or external factors
- provide training for all managers and supervisory staff in good management practices

Employees who experience unreasonable stress which they think may be caused by work should raise their concerns with their Business Manager who will deal with the issue promptly and in the strictest confidence and make all reasonable efforts to reduce work related stress.

Following action to reduce the risks, they shall be reassessed. If the risks remain unsustainable by the employee concerned, efforts shall be made to reassign that person to other work for which the risks are assessed as tolerable.

On return to work for any period of stress-related illness, The Trust will take account of medical advice and the needs of The Trust when determining which duties are most appropriate.

Where appropriate a risk assessment of stress in the workplace will be carried out under the Management of Health and Safety at Work Regulations 1999.

If you consider you may be suffering from stress for reasons connected with your workload, you should approach the Business Manager who will deal with the issue promptly and in the strictest confidence and make all reasonable efforts to reduce work related stress. Formal stress counselling may be arranged by the Business Manager where appropriate.

11.29 TRANSPORT

The Trust Estates Manager is responsible for arranging the annual maintenance and MOT of the minibus. There is a Trust minibus policy in place, and this should be followed whilst using the minibus.

All drivers must complete the driver checklist before any trip.

All staff are responsible for reporting any damage or unsafe condition on to the hazard reporting system, IAMCOMPLIANT Ratios and arrangements on the Minibus must be made by the person who is organising the trip and these will be approved through the trips approval process outlined in the Educational Visits Policy of each Academy.

11.30 VISITORS – HEALTH AND SAFETY

Under the provisions of the Health & Safety at Work Act 1974, Leger Education Trust has a duty of care to all its visitors. Visitors are to be made aware, by the member of staff that they have come to see, of any potential hazards to their health and safety within the area of The Trust they intend to visit. They are to obey all displayed warning notices and verbal instructions.

Contractors who arrive to carry out work must inform the department/s of any potential hazard that may arise due to their work. (See Guide to Contractors available on request from the School Business Manager).

All visitors are to be made aware of the emergency procedures.

To distinguish between intruders and authorised visitors, notices informing “visitors” of the need to report to the main reception desk and obtain a visitor’s badge and lanyard (see Lanyard Policy) should be displayed at all Academy entrances. If the person is unable to offer an acceptable reason for remaining, the Headteacher should politely ask them to leave in a clear and firm way.

NEVER touch the intruder, even lightly, as this can be misinterpreted and provoke hostile reactions. If they refuse to leave, the Headteacher should not attempt to force them to leave but dial 999 to call the police. Note that the Headteacher can be called by radio from the Front Reception Desk. In this situation, try to remain calm and avoid raising your voice or being drawn into an argument.

If the police are called as a result of a physical assault, in serious cases they have the power to arrest the assailant and take legal proceedings directly.

Take a note of the description of any intruders and any conversation which you might have had with them, even when they leave the premises on your request or where they might have refused to leave initially but then leave before the police arrive. In the unfortunate event of any injuries being sustained, a separate report should be made on the accident reporting system and returned to the Executive Director of Operations.

Some "Intruders" are ex-students, merely making a social call. Help them to obtain an official Visitor's Pass, available from Reception.

Leger Education Trust will provide the fullest support legally possible to staff in connection with alleged assaults, threats or criminal damage arising in the course of or out of the performance of their duties.

Troublemakers - Guidance, "Academy Security: Dealing with Troublemakers", was issued by the DCSF on 16 December 1997 to all Academies in England. The guidance spells out the powers of the police and the criminal justice system to deal with troublemakers in and around Academies. The guidance also covers section 4 of the Offensive Weapons Act 1996. It is an offence under the Offensive Weapons Act 1996 to carry, without reason or authority, a knife or offensive weapon in or around Academies. This applies to all knives, other than folding pen knives, with a three inch or smaller blade. However, Leger Education Trust has banned all knives, regardless of the length of the blade.

The Trust Board has authorised the Headteacher (or nominee), in exercising day to day management of the Academies, to determine who should have access to the premises. The Board have determined that nobody (including governors, staff, students or parents) has an unrestricted right of access to The Trust premises except those with a statutory right to do so. During the day parents should act as visitors, complying with appropriate arrangements; they should present themselves to the main reception desk, following a route to other defined parts of the Academy as determined by the Headteacher (or nominee).

Suppliers, contractors and commercial deliveries must follow separate arrangements as determined by the School Business Manager.

Leger Education Trust buildings and their grounds are private places and anyone entering without authority (including students, ex-students and parents) is trespassing and may be asked to leave by the Headteacher (or nominee). Causing harassment, alarm or distress to staff or students, threatening, abusing or insulting staff, on or off Trust premises, could be an offence. The Headteacher (or nominee) will exercise professional judgement in deciding whether to involve police in incidents of this nature.

Whether the Headteacher (or nominee) has determined that an individual is trespassing, the Board have authorised a letter to be sent out on their behalf warning trespassers of the possibility of proceedings being brought against them. The maximum penalty for this offence is a fine of £500. When deemed necessary, a "troublemaker" will be informed in writing by a standard form letter, of the limitations both in terms of time and place as to their permission to enter the premises.

General precautions

Any members of staff going off site must ensure that they sign out at the main office. On their return they must be sure to sign back in again.

All visitors to the Academy must sign in and sign out in the Visitors book/system, so that a list of visitors in the building is available at any time.

Any events, which use the premises out of working hours, especially where visitors to the Trust are involved, will be subject to particular procedures for the specific event. The key individual organising the event, will check procedures with the School Business Manager.

11.31 WORKING AT HEIGHT

The school will take all reasonable steps to provide a safe working environment for all employees who may be affected by work at height activities.

The school will ensure that:

- all work activities that involve work at height are identified and assessed
- the need to undertake work at height will be eliminated whenever it is reasonably practicable to do so all work at height is properly planned and organised
- all employees required to use stepladders or ladders are competent
- regular inspections of all stepladders and ladders are undertaken
- any contractors on school property comply with this policy
- ladders and stepladders are secured to prevent unauthorised use.

Standing on desks, chairs or other furniture is not permitted. If decorations or displays are to be hung then a step stool or step ladder of appropriate height must be used.

The School Business Manager is responsible for ensuring the completion of risk assessments for all working at height tasks in the Academy.

For all activities involving work at height a risk assessment must be conducted and the findings recorded. This assessment should consider both the work to be done and the most appropriate access equipment to be used (not just what is available) to achieve a safe system of work.

When determining control measures the following hierarchy of controls for work at height as follows must be considered:

- avoid the risk by not working at height, for example by working from existing platforms, using long reach equipment etc.
- If it is not practicable to do the work safely in some other way then: use work equipment or other measures to prevent falls; and where the risk of a fall cannot be eliminated further controls to minimise the distance and consequences of a fall should one occur.

The detail of the assessment will depend on the level of risk involved, as a general guide the risk assessment should consider:

- The task and activity involved
- The people (medical conditions etc.)
- Equipment to be used including erection and dismantling
- The location (proximity to roads, overhead electrical cables etc.)
- The environment, poor conditions and slippery surfaces (weather, temperature etc.)
- The effect on pedestrians, falling objects

Ladders should not be used simply because they are readily available, the risk assessment should determine if a ladder or stepladder is appropriate for the task.

Ladders and stepladders should only be used for short duration tasks (less than 30 minutes), light duty tasks or where more suitable access equipment cannot be used due to existing features of the site which cannot be altered.

For example, whilst a ladder may reach, if the task requires strenuous work, carrying bulky/heavy equipment or likely to take more than 30 minutes then an alternative means of access such as a tower scaffold or podium steps would be more appropriate.

Only those persons who have been trained to use ladders safely may use them.

All ladders should be secured against unauthorised use

Prior to use it should always be ensured that the ladder is in good condition and fit for purpose.

Where ladders are to be used to work from it should be ensured that:

- a secure handhold and support are available at all times;
- three points of contact should be maintained at all times;
- the work can be completed without stretching;
- the ladder can be secured to prevent slipping.

Do not work at height when you are alone. If you are planning to use a step ladder, ask the School Business Manager to help you erect it properly and have an assistant to hold the ladder steady and pass you the materials you need.

Your waist should be no higher than the top platform of the ladder. Never overreach. Try always to keep one hand free on the ladder to steady yourself.

The School Business Manager is responsible for the purchase and maintenance of all ladders in the Academy.

The school will compile a register of equipment (excluding kick stools). Where there is more than one piece of equipment each should be indelibly marked with an identifying number.

Equipment for work at height, should be inspected prior to use and by a competent person termly/6 monthly. The inspection will depend upon the complexity of the equipment.

In the case of tower scaffolds a competent person must inspect these prior to its first use and thereafter every 7 days that it remains in place. Only persons that have received the appropriate training (PASMA) can erect, alter, inspect and dismantle tower scaffolds.

11.32 WORK EXPERIENCE PLACEMENTS (STUDENTS)

Student work placement/experience relates to the placement of students on employers' premises in which the student carries out a particular task or duty, or range of tasks or duties, more or less as would an employee, but with the emphasis on the learning aspects of the experience.

The Working Time Regulations apply to students on work placements. Students should not work for more than five days in any consecutive seven-day period. However, the number of hours worked and pattern of work is normally a matter for agreement by the placement provider, school and students. Students should not be asked to work excessively long hours, or unnecessarily unsocial hours, and should not work more than a standard eight-hour day.

Students may not be assigned to work during the 'restricted period' between 22:00 and 06:00 (or after 23:00 or before 07:00 depending on the working pattern of the company).

Young persons are entitled to a daily rest period of at least 12 consecutive hours in each 24-hour period in which they are at work and to a weekly rest period of at least 48 hours in each seven-day period during which they are at work.

Students are also entitled to rest breaks if their working time is more than four and a half hours. The rest break should be at least 30 minutes.

There is no requirement to DBS check all staff of the host employer that may come into contact with a student on placement. Only a member of staff with day to day responsibility for the student or as part of their job description – this could be the manager, a supervisor or a mentoring employee – should be required to have a DBS check.

In the vast majority of placements – as the employer/employees involved will not have regular unsupervised access to young people at work – there is no need for DBS checks to take place.

However, DBS checks must be considered in all the following cases:

1. Students identified by the school as vulnerable for educational, medical, behavioural or home circumstance reasons, including those who have special educational needs or are young (aged under 16).
2. Students on placements lasting more than 15 days over an extended period, especially where these involve:
 - regular lone working with an employer over long periods (rule of thumb would suggest anything over half a day at a time)
 - placements located in particularly isolated environments with 1:1 working
 - placements involving a high degree of travelling on a 1:1 basis
3. Placements which include a residential element.

The fact that a particular placement falls into one of the above categories does not necessarily mean that a DBS check will be required. Such a decision will depend on an assessment of the overall potential risks posed to a young person and will take into account any systems in place to minimise these risks.

If any of the above three cases apply, additional safeguards should be put in place. These include:

- School staff or other partners who arrange, vet or monitor the work placements should have training in child protection
- Employers, supervisors or training providers hosting students should be asked to endorse a child protection policy or statement of principles
- School policies and procedures should define what actions need to be taken by whom and when if any child protection issues are raised, before, during or after the placement
- Students should also be given clear advice and a point of contact in the school in case of any problems.

For clarity, DBS checks and additional safeguards (as above) are not necessary:

- For short-term extended work experience for half a day or a day a week lasting one term or less
- For block placements lasting up to three weeks
- Where the placement involves contact with visitors who will only have contact with children/young people on an ad hoc or irregular basis for short periods of time
- Where people will have contact with children/ young people simply because they are in the same location or as part of their work, but who will not have regular, unsupervised access to the children/young people at work
- Where the placement involves Secondary age students undertaking voluntary work, citizenship or vocational studies or work experience in other schools. In these cases, the school placing the student should ensure that they are suitable for the placement in question. (Reference: 'The Work-Related Learning Guide (Second Edition)' 2009)

11.33 ANIMALS/PETS ON SITE

Animals

Each school will be allowed animals for a specific reason on site if they are through a competent third party provider who can provide suitable insurance and risk assessments for the activities which are to take place. The Headteacher must sign off the activity before it is agreed and full consideration must be made for everyone who may be on site.

Pets

Personal pets must not be brought on site for any reason unless it has been agreed by the Trust Estates Manager or Chief Operating Officer. This is to ensure that the correct measures have been considered, there is a genuine educational need, and the risks are as low as reasonably practicable so anyone who may come in contact with the pet.

11.34 SLIPS, TRIPS AND FALLS

Each school will ensure that floors and walkways are suitable for their purpose, in a good condition and free from obstructions. They will arrange regular visual inspections of premises and take appropriate remedial action to reduce risks. Staff and students should not cause slip or trip hazards, should clear any spillage that they make and should wear suitable footwear while at work. This hazard will be considered in the appropriate risk assessments which are conducted by each school